

**EXTREMELY LIGHTWEIGHT AND
STABLE THANKS TO CARBON
FRAME**

/

**LARGE AND COMFORTABLE SEAT
- FROM BIRTH UP TO 22 KG**

/

**WITH UPF 50+ AND XL
PANORAMIC WINDOW**

/

**IDEAL FOR TRAVEL BY PLANE
AND TRAIN**

/

**ELEGANT DETAILING ON THE
FRAME, BUMPER BAR AND
HANDLEBAR**



LITE N CARE
ULTRA-LIGHT CARBON PUSHCHAIR FOR CITY AND TRAVEL



WEIGHS ONLY 5.5 KG - EXTRA
LIGHT AND HIGH QUALITY

Narrow alleyways, steep stairs, travelling? The ultra-light carbon pushchair makes life easier. With the shoulder strap, you can carry Lite N Care comfortably and keep one hand free for your child.



PERFECT FOR TRAVEL AND DAY TRIPS

Airport, train station, bus: fold the Lite N Care compactly with one hand to fit in the cabin luggage of many airlines (IATA-compliant). Your adventure starts right away!



GROWS WITH YOUR CHILD - UP
TO 22 KG

Napping or exploring: the long, adjustable backrest and footrest ensure a comfortable position. The swivel bumper bar makes getting in and out easy.



LITE N CARE
ULTRA-LIGHT CARBON PUSHCHAIR FOR CITY AND TRAVEL



RELIABLE SUN CANOPY AND XL
VENTILATION

On hot summer days: lightweight fabrics, extra-large canopy with UPF 50+ and XL mesh panels provide shade and fresh air. And you always have a clear view of your child!



WITH SHOPPING BASKET

Toys, snacks, favourite cuddly toy: there's plenty of space in the basket.

HIGH-QUALITY LOOK THANKS TO
ELEGANT DETAILS

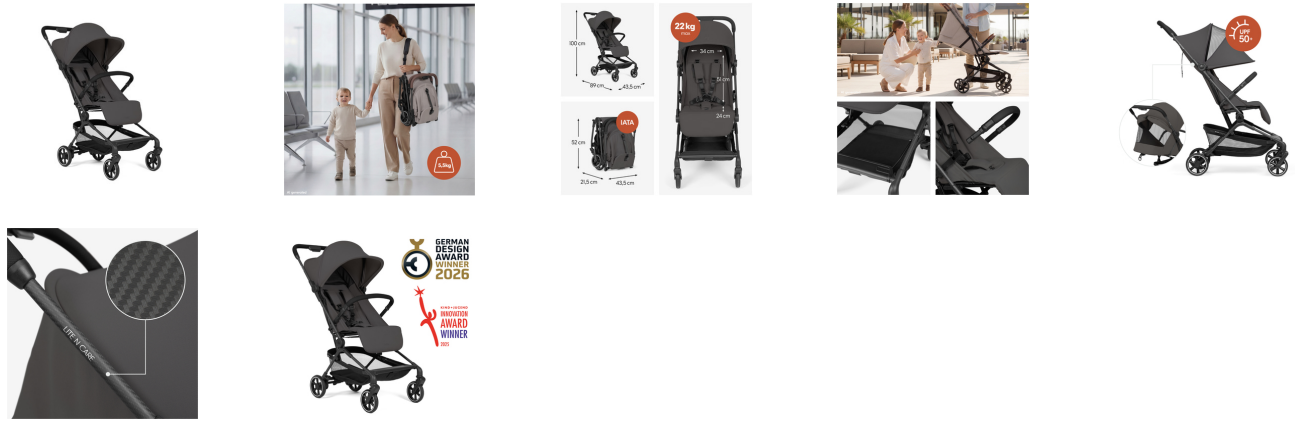
Sporty and elegant: the combination of a high-quality carbon fibre frame and elegant leather look on the handlebar and bumper bar creates a modern look that perfectly blends design and quality.



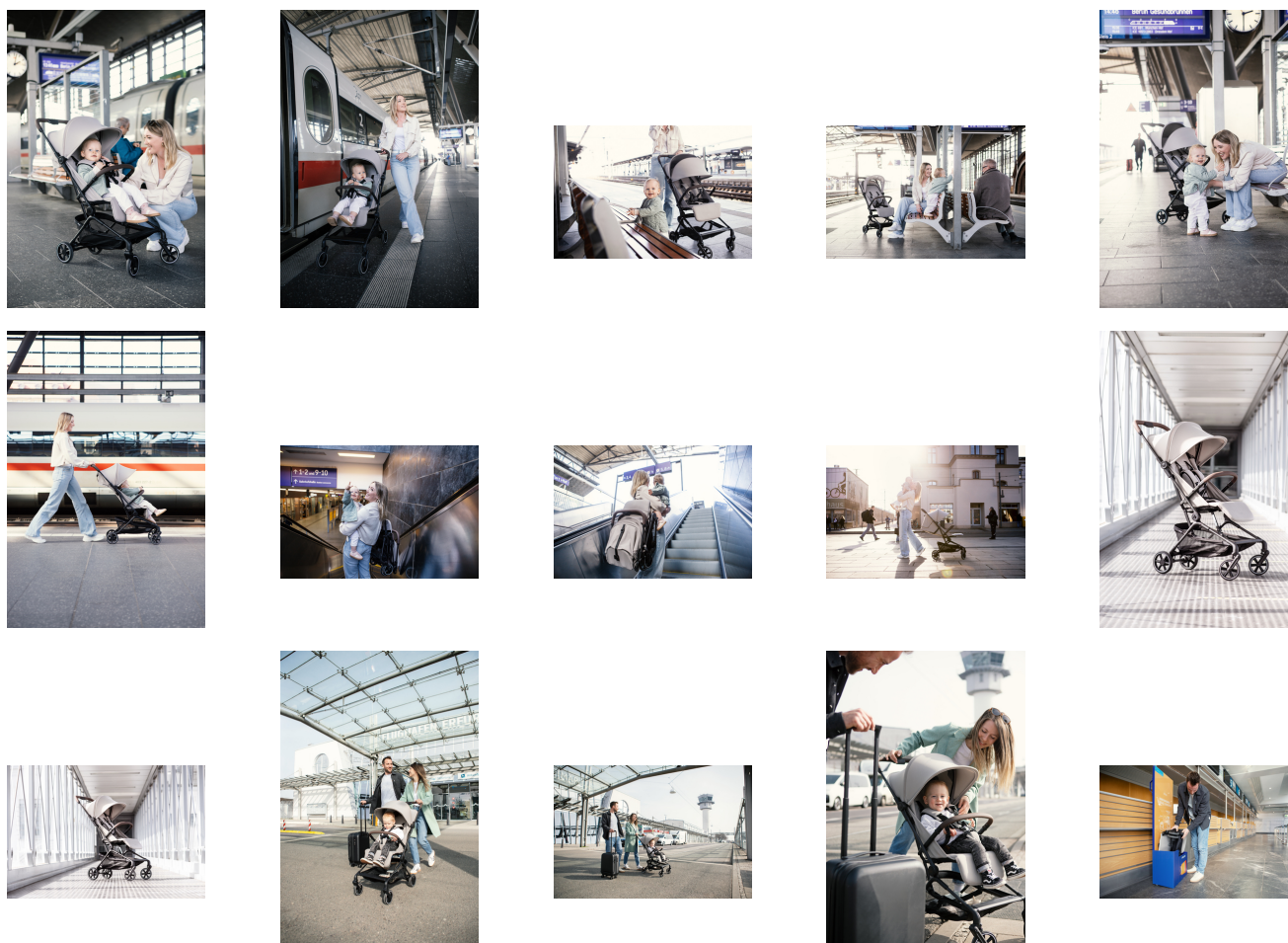
LITE N CARE ULTRA-LIGHT CARBON PUSHCHAIR FOR CITY AND TRAVEL



Product Images



Lifestyle Images



Your ultra-light city and travel pushchair made of carbon fibre**Only 5.5 kg - extra light and high quality**

Whether navigating narrow streets, climbing stairs, or catching a flight: the unique carbon frame is extra-light without compromising on stability or comfort. Leather-look accents on the handlebar and bumper bar add a modern, stylish touch.

Perfect for travel and day trips

Airport, train station, bus: with just one hand, you can fold the pushchair down so compactly it fits in the cabin luggage of many airlines (IATA-compliant). Your adventure starts right away! The shoulder strap lets you carry it effortlessly and keep one hand free.

Grows with your child - up to 22 kg

Napping or exploring: the long, adjustable backrest and footrest with reclining function ensure a comfortable position. The swivel bumper bar makes getting in and out easy.

Sun canopy and XL ventilation

On hot summer days: lightweight fabrics, UPF 50+ canopy and XL mesh panels provide shade and airflow. And you always have a clear view of your child!

Space for everything you need when out and about

Toys, snacks, favourite cuddly toy: there's plenty of space in the basket.

Shipping

- Stroller
- Instruction manual
- Carry strap

Videos

- <https://www.youtube.com/watch?v=I6ejXfnFvBc>
- <https://www.youtube.com/watch?v=I6ejXfnFvBc>
- hauck Youtube Channel

LITE N CARE
ULTRA-LIGHT CARBON PUSHCHAIR FOR CITY AND TRAVEL



Product net weight 5,60 kg 12.35 lb / US

Dimensions

Folded 20.5 x 16.9 x 8.3 in

Built up 35 x 16.9 x 39.4 in

Lying area 34.6 x 13.4 in

Dimensions backrest 20.1 x 13.4 in

Dimensions seat area 9.4 x 13.4 in

Shopping basket Yes

Detachable front bar Yes

Sun protection UPF 50+ Yes

Suspension Yes

Easy Fold Yes

One-handed folding Yes

Brake type Combined brake system

Max. load 55 lbs (48 lbs kids + 7 lbs basket)

Legrest adjustment 2 x

Canopy type 2 Section + 1 zipper section

Large sun canopy Yes

Harness 5-Point harness

Easy to clean Yes

Recommended age / weight 0 - 48 months

Special features Easy to fold
Extra high backrest
Sun protection UPF 50+
From birth up to 4 years
One-hand folding
Carbon frame
IATA compatible

Wheels

Diameter front/back wheel 5.12/5.91 in

Dimensions

Wheels

Backrest

Handle

Detachable wheels

Front and back wheel

Wheel type

EVA wheels

Backrest

Backrest adjustment

3 x /1)109°; 2)128° 3)161 °

One-handed backrest inclination

Yes

Handle

Handle height

39.37 in